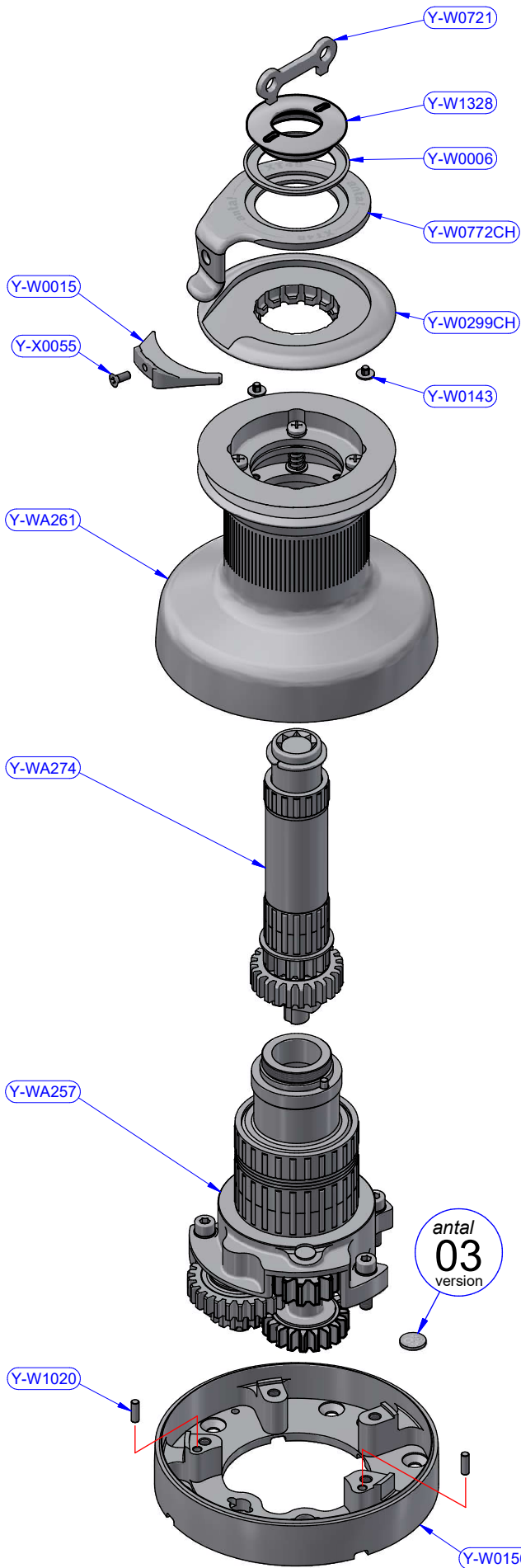
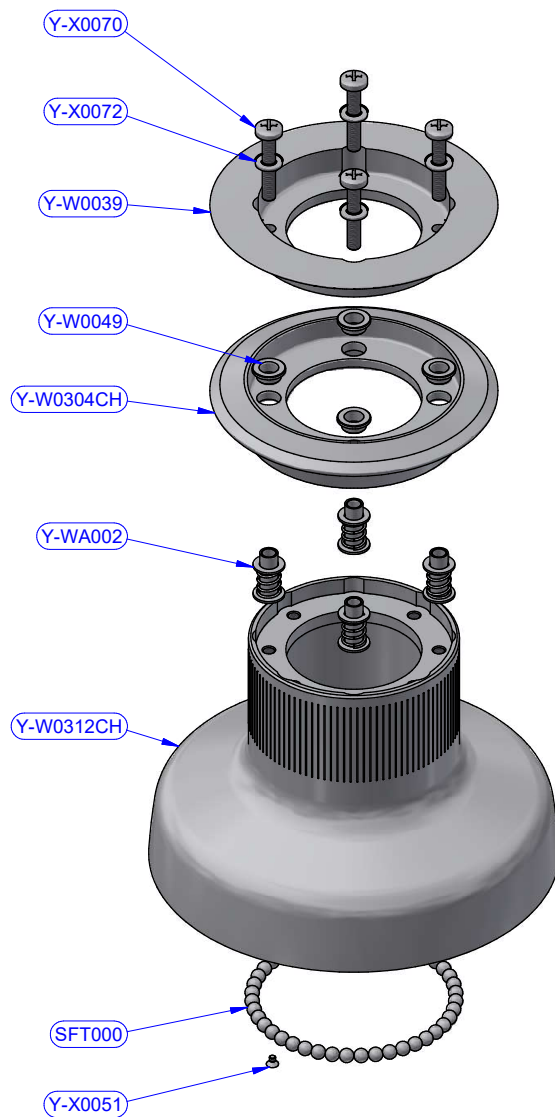


PART LIST			
CODE	DESCRIPTION	MATERIAL	Q.TY
XT48CHX	Brass	Various	1
Y-WA280	Disengagement box + Horizontal drive assy	Various	1

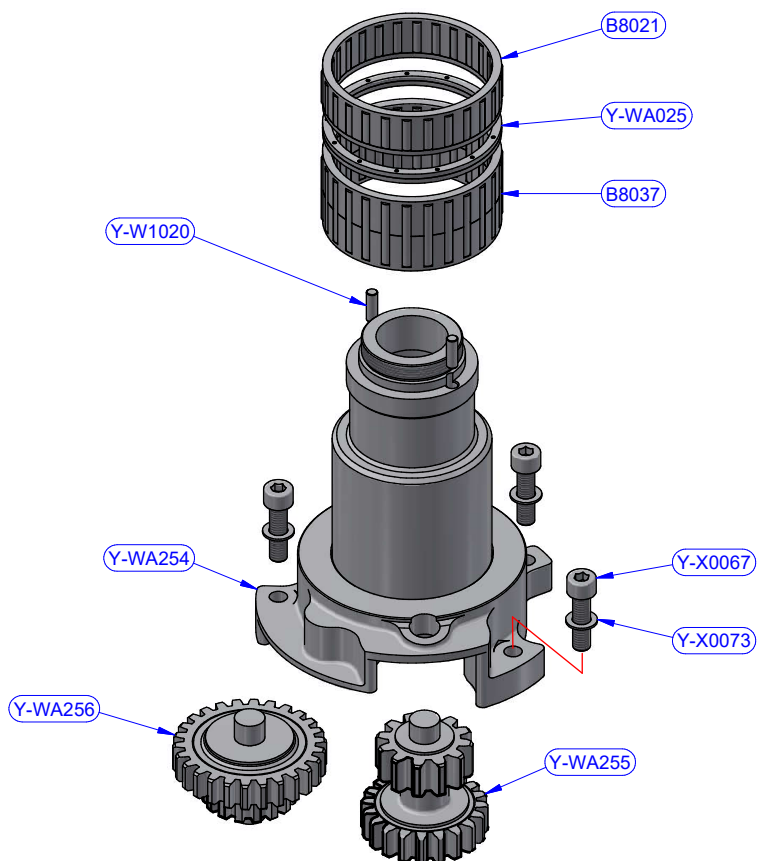
MOTOR		
CODE	DESCRIPTION	Q.TY
Y-W0416	700W 12V	1
Y-W0417	700W 24V	1
Y-W1377	700W 48V	1



XT48CHX - PART LIST			
CODE	DESCRIPTION	MATERIAL	Q.TY
Y-W0006	Upper ring washer	Plastic	1
Y-W0015	Stripper	Plastic	1
Y-W0143	ST plug	Plastic	4
Y-W0156	Skirt	Aluminium	1
Y-W0299CH	Upper disk	Chromed brass	1
Y-W0721	Opening Tool	S.Steel	1
Y-W0772CH	Self-tailing arm	Chromed brass	1
Y-W1020	Cylinder pin	S.Steel	2
Y-W1328	Upper cap	S.Steel	1
Y-WA257	Base + Gears assy	Various	1
Y-WA261	Drum + ST disks assy	Various	1
Y-WA274	Main shaft assy	Various	1
Y-X0055	Screw	S.Steel	1

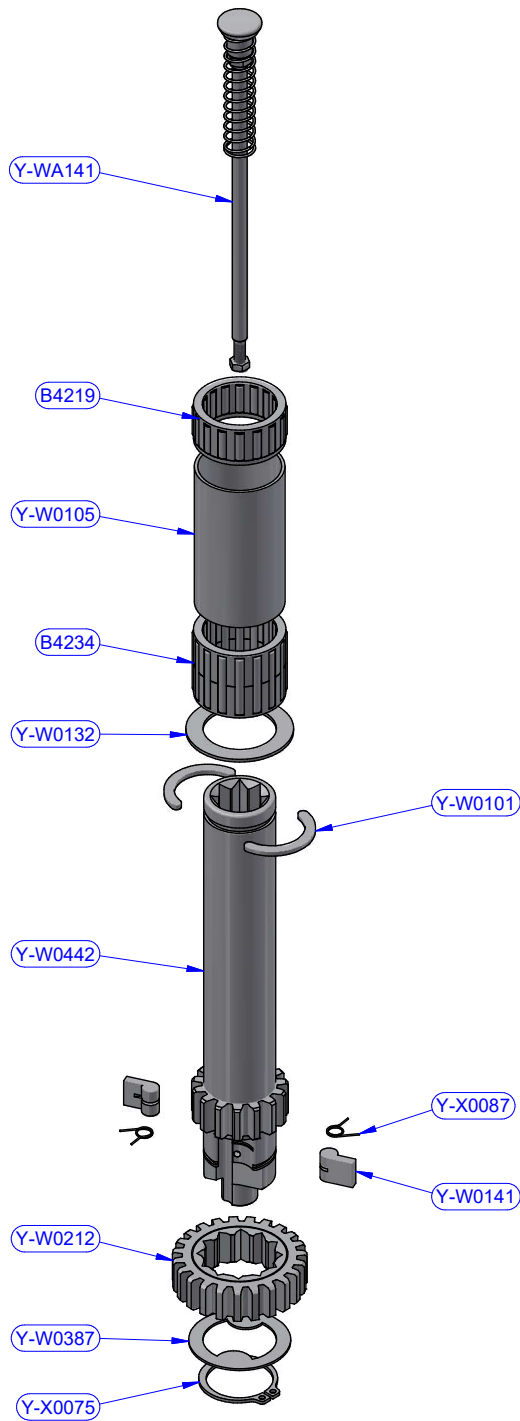


Y-WA261 - PART LIST			
CODE	DESCRIPTION	MATERIAL	Q.TY
SFT000	Torlon ball	Torlon	44
Y-W0039	ST central disk	Aluminium	1
Y-W0049	ST disk bush	Plastic	4
Y-W0304CH	ST lower disk	Chromed brass	1
Y-W0312CH	Drum	Chromed brass	1
Y-WA002	ST-spring assy	S.Steel	4
Y-X0051	Screw	S.Steel	1
Y-X0070	Screw	S.Steel	4
Y-X0072	S.Steel washer	S.Steel	4

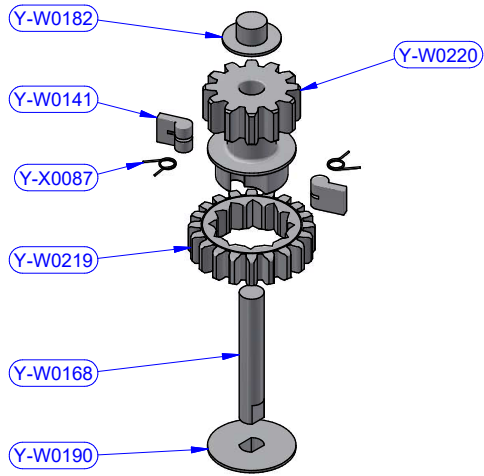


Y-WA257 - PART LIST

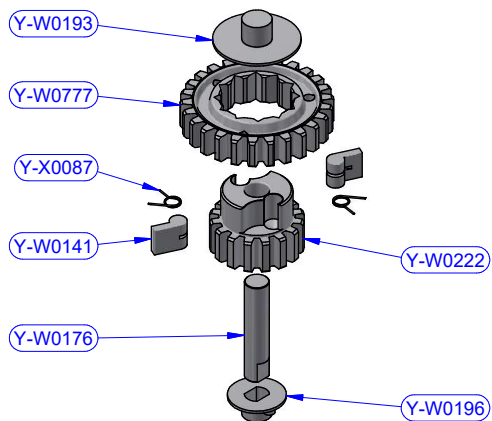
CODE	DESCRIPTION	MATERIAL	Q.TY
B8021	Roller bearing	Plastic / S.Steel	1
B8037	Roller bearing	Plastic / S.Steel	1
Y-W1020	Cylinder pin	S.Steel	2
Y-WA025	Spacer	Plastic	1
Y-WA254	Base + Stem	Various	1
Y-WA255	Gears kit	Various	1
Y-WA256	Gears kit	Various	1
Y-X0067	Screw	S.Steel	4
Y-X0073	S.Steel washer	S.Steel	4



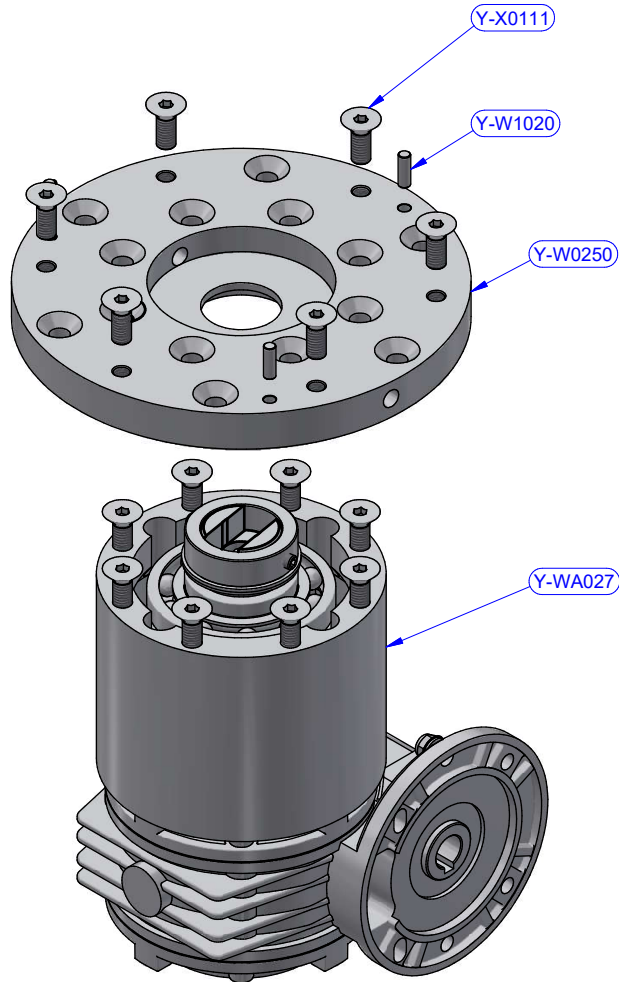
Y-WA274 - PART LIST			
CODE	DESCRIPTION	MATERIAL	Q.TY
B4219	Roller bearing	Plastic / S.Steel	1
B4234	Roller bearing	Plastic / S.Steel	1
Y-W0101	Half-ring	Brass	2
Y-W0105	Pipe spacer	Plastic	1
Y-W0132	S. Steel washer	S.Steel	1
Y-W0141	Pawl	S.Steel	2
Y-W0212	Gear "A2"	Bronze	1
Y-W0387	Special washer	S.Steel	1
Y-W0442	Main shaft	S.Steel	1
Y-WA141	Disengagement rod kit	S.Steel	1
Y-X0075	Seeger ring	S.Steel	1
Y-X0087	Torsion spring	S.Steel	2



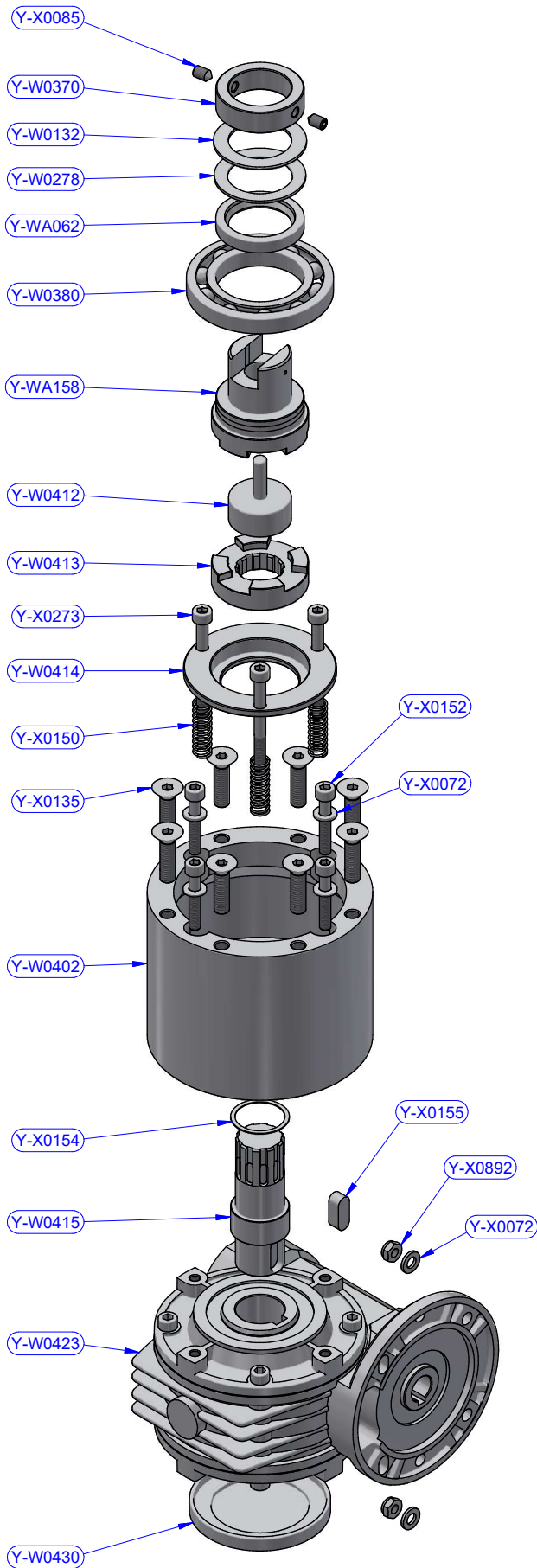
Y-WA255 - PART LIST			
CODE	DESCRIPTION	MATERIAL	Q.TY
Y-W0141	Pawl	S.Steel	2
Y-W0168	Gear axis	S.Steel	1
Y-W0182	Gear upper washer	Plastic	1
Y-W0190	Gear lower washer	Plastic	1
Y-W0219	Gear "B1"	Bronze	1
Y-W0220	Gear "B2"	Bronze	1
Y-X0087	Torsion spring	S.Steel	2



Y-WA268 - PART LIST			
CODE	DESCRIPTION	MATERIAL	Q.TY
Y-W0141	Pawl	S.Steel	2
Y-W0176	Gear axis	S.Steel	1
Y-W0193	Gear upper washer	Plastic	1
Y-W0196	Gear lower washer	Plastic	1
Y-W0222	Gear "D2"	Bronze	1
Y-W0777	Gear "D1"	Bronze	1
Y-X0087	Torsion spring	S.Steel	2



Y-WA280 - PART LIST			
CODE	DESCRIPTION	MATERIAL	Q.TY
Y-W0250	Skirt flange	Aluminium	1
Y-W1020	Cylinder pin	S.Steel	3
Y-WA027	Disengagement box + Horizontal drive assy	Various	1
Y-X0111	Screw	S.Steel	6



Y-WA027 - PART LIST			
CODE	DESCRIPTION	MATERIAL	Q.TY
Y-W0132	S.Steel washer	S.Steel	1
Y-W0278	Resin washer	Resin	1
Y-W0370	Shaft connection	S.Steel	1
Y-W0380	Ball bearing	S.Steel	1
Y-W0402	Disengagement box	Aluminium	1
Y-W0412	Disengagement	Bronze	1
Y-W0413	Lower coupling	S.Steel	1
Y-W0414	Thrust ring	Bronze	1
Y-W0415	Gearbox shaft	Bronze	1
Y-W0423	Horizontal gearbox	Alu + S.Steel	1
Y-W0430	Gearbox cap	Aluminium	1
Y-WA062	Packing ring	Rubber	1
Y-WA158	Upper coupling	Various	1
Y-X0072	S.Steel washer	S.Steel	6
Y-X0085	Cone point set screw	S.Steel	2
Y-X0135	Screw	S.Steel	8
Y-X0150	Compression spring	S.Steel	3
Y-X0152	Screw	S.Steel	4
Y-X0154	C.F. washer	Tufnol	1
Y-X0155	Parallel key	S.Steel	1
Y-X0273	Screw	S.Steel	3
Y-X0892	Self-Locking nut	S.Steel	2